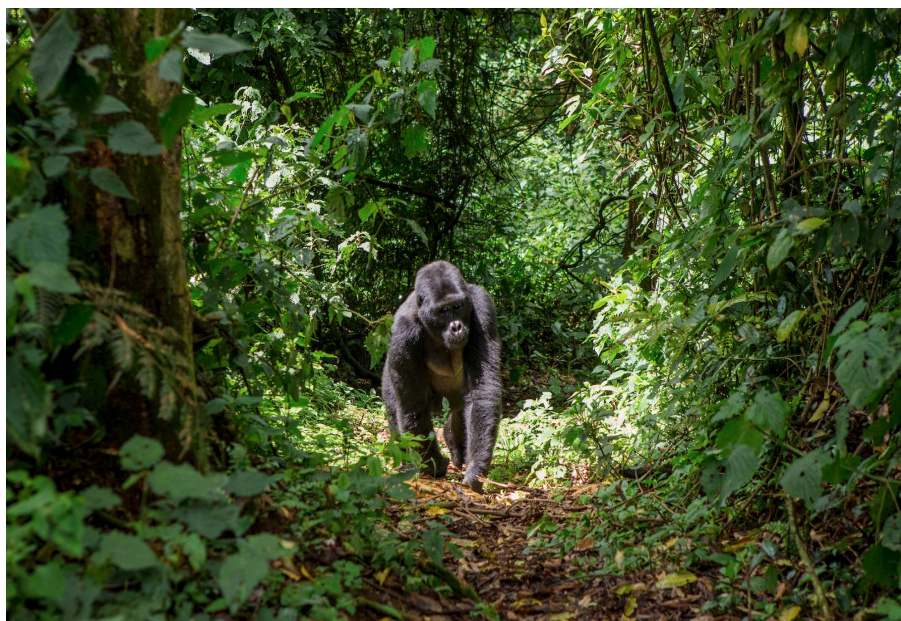


Full Itinerary

UGANDA GORILLA AND CHIMP SAFARI



TALK TO OUR WELL
TRAVELLED TEAM OF
EXPERTS

UK 0800 689
0941

USA 1 800 949
3295

Monday to Thursday 09:00am -
8:00pm. Friday 09:00am - 05:30pm.
(London time)



JOURNEY SNAPSHOT

ACTIVITY LEVEL:

Level 3

DESTINATION:

Uganda Gorilla and Chimp Safari

DURATION:

6 days

FLIGHT INFORMATION:

PICKUP LOCATION:

Kampala International airport

OVERVIEW

A once in a lifetime experience to see incredible primates in their natural habitat.

This trip should be on everyone's bucket list. The thrill of seeing a mountain gorilla family up close is unparalleled - is an unbelievable privilege to witness them going about their daily life around you. The chimpanzee tracking experience is equally enthralling. More often than not you will hear them before you see them and their cheeky antics and human characteristics are captivating. Added to this mix, the stunning savannah plains of Queen Elizabeth National Park are home to lion, elephant, buffalo and leopard as well as other safari regulars. This really is a wildlife adventure like no other!

ITINERARY SUMMARY

Day 1 - Kibale Forest National Park

Day 2 - Queen Elizabeth National Park

Day 3 - Queen Elizabeth National Park

Day 4 - Bwindi Impenetrable National Park

Day 5 - Bwindi Impenetrable National Park

Day 6 - Kampala and home

FULL ITINERARY

DAY 1 - KIBALE FOREST NATIONAL PARK

On arrival at Kampala International Airport you will be met by a Big Safari Company representative and transferred by road to Kibale Forest National Park. In the afternoon visit the forest for excellent viewing of primates and other forest animals as well as enjoying a guided nature walk in the Bigodi Wetland sanctuary which is maintained by the local community. Here you can see prolific bird life, blue monkeys, baboons, otters, mongoose and bush pigs amongst other species. Transfer to your accommodation for dinner.

Included meals: Dinner

Accommodation: Papaya Lake Lodge

DAY 2 - QUEEN ELIZABETH NATIONAL PARK

After breakfast you will report for a briefing at the Kanyanchu Tourist Centre before setting off to track chimpanzees on foot. On the walk through the forest you will see a variety animals, birds, butterflies and insects. However, everything stops as soon as you hear the crashing in the trees and loud familiar calls. Your first glimpse of the chimpanzees will give you goosebumps. Entertaining and funny, their human-like characteristics are a joy to observe. Return to the lodge in the afternoon and transfer to Queen Elizabeth National Park.

Included meals: Breakfast, lunch, dinner

Accommodation: Mweya Safari Lodge

DAY 3 - QUEEN ELIZABETH NATIONAL PARK

After your morning breakfast, enjoy a game drive in Queen Elizabeth National Park, where the variety of habitats means there is an extensive range of mammals and primates. On the game drive you can try to spot lion, leopard, buffalo elephant and giant forest hogs. Return to the lodge for lunch and in the afternoon go on a boat cruise on the Kazinga Channel. There is a high concentration of hippo here and the boat safari offers an excellent platform for photography, bird watching and game viewing.

Included meals: Breakfast, lunch, dinner

Accommodation: Mweya Safari Lodge

DAY 4 - BWINDI IMPENETRABLE NATIONAL PARK

After breakfast transfer to Bwindi. On the way you will enjoy a thrilling game walking safari in the Ishasha sector of Queen Elizabeth National Park. On your game drive you will go in search of unique tree climbing lions as well as warthogs, leopard and hyena. Transfer to the lodge for dinner.

Included meals: Breakfast, lunch, dinner

Accommodation: Buhoma Lodge

DAY 5 - BWINDI IMPENETRABLE NATIONAL PARK

Today is the highlight of your trip and will probably become one of the most memorable days of your life! After breakfast proceed for the morning briefing before embarking on your Gorilla Trek which may last the entire day. Sometimes the walk through dense rainforest and bamboo covered slopes can be hard, but your effort will be more than rewarded when you catch a glimpse of a magnificent silverback. For conservation purposes your time in the company of a mountain gorilla family will be limited to an hour. It is an incredible, jaw-dropping privilege to be able to observe these creatures going about their daily life in front of you. If time allows on the way back you will go for a guided community walk to experience the livelihoods of the local communities, visit a herbalist, blacksmith and be entertained by traditional dances.

Included meals: Breakfast, lunch, dinner

Accommodation: Buhoma Lodge

DAY 6 - KAMPALA AND HOME

After breakfast transfer to Kampala via a stopover at the Equator monument where you will have the remarkable photo opportunity of standing

in two hemispheres at the same time! There is also another stopover at the Mpigi Royal Drum Makers centre where you will be able to watch the ceremonial drums being crafted using traditional methods. Arrive in Kampala late afternoon and be transferred to the airport for your international flight home.

WHAT'S INCLUDED

- Ground transfers as specified
- Accommodation, meals and local drinks as specified
- Chimp tracking permit and national park fees
- Safaris and activities specified
- English speaking guide

WHAT'S NOT INCLUDED

- International flights
- visas
- Travel insurance
- Drinks (unless specified)
- Phone calls
- Laundry
- Personal purchases
- Tips and gratuities
- Any COVID-related testing

IMPORTANT INFORMATION

- Vaccinations are recommended for Uganda. Please consult your doctor for advice.
- US Passport holders require an e-Visa to visit Uganda.
- Please let The Big Safari Company know prior to travelling if you have any medical needs or take any medication that we need to be made aware of to ensure that you have a safe and pleasant tour.
- Cancellation 90 - 0 days prior to departure: cancellation fee is 100%. It is your responsibility to ensure the correct travel insurance in place to protect you against the need to cancel your holiday. Deposits are non-refundable. Balance payments due 14 weeks prior to departure.
- Further terms and conditions apply and will be provided upon request or at the time of booking. The Big Safari Company reserves the right to withdraw any offer prior to accepting a reservation request. This does not affect your statutory rights. This offer is subject to availability and space is limited.

BOOK YOUR JOURNEY

Choose from the list of dates below

Call to Book

UK 0800 689 0941
USA 1 800 949 3295

Monday to Thursday 09:00am - 8:00pm. Friday 09:00am - 05:30pm. (London time)