

Full Itinerary

NAMIBIA FAMILY SELF-DRIVE SAFARI

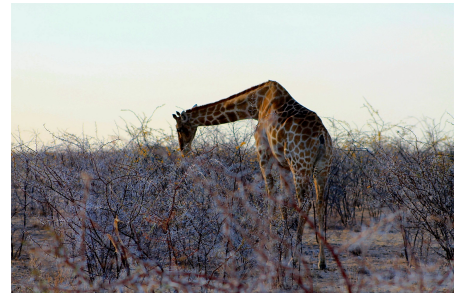


TALK TO OUR WELL
TRAVELLED TEAM OF
EXPERTS

UK 0800 689
0941

USA 1 800 949
3295

Monday to Thursday 09:00am -
8:00pm. Friday 09:00am - 05:30pm.
(London time)



JOURNEY SNAPSHOT

ACTIVITY LEVEL:

Level 2

DESTINATION:

Namibia Family Self-drive Safari

DURATION:

11 days

FLIGHT INFORMATION:

PICKUP LOCATION:

Windhoek International Airport

OVERVIEW

A perfect destination for children, Namibia is safe, fun and easy to drive around. This family road trip delivers unbeatable memories that will last a lifetime.

Sometimes safaris are not a child-friendly option in Africa. However, Namibia's varied attractions and welcoming lodges (with family rooms, specially designed game drives for children, activities and meals) make travelling with children here not only easy, but great fun. Add to that the freedom of a self drive 4 x 4 and you are in control of your journey with the freedom to stop and stretch little legs along the way. Experienced guides will be able to answer endless questions and you will be able to enjoy an incredible, adventurous vacation. A trip here will be a lifelong gift to your children, as they explore and experience the uniqueness of the untamed African bush with its many wild animals both big and small!

ITINERARY SUMMARY

Day 1 - Windhoek

Day 2 - Sossusvlei

Day 3 - Sossusvlei

Day 4 - Swakopmund

Day 5 - Swakopmund

Day 6 - Twyfelfontein

Day 7 - Etosha National Park

Day 8 - Onguma Game Reserve

Day 9 - Onguma Game Reserve

Day 10 - Erindi Game Reserve

Day 11 - Windhoek and home

FULL ITINERARY

DAY 1 - WINDHOEK

You will be met by a Big Safari Company representative on arrival at Windhoek Airport and transferred to your hotel which has stunning views over the city.

Included meals: None

Accommodation: Hotel Thule

DAY 2 - SOSSUSVLEI

After breakfast, you will be transferred to pick up your rental car. The representative will explain all the features of your 4 x 4 and give you tips on the driving conditions on the route that you will take. Drive south through the incredible changing landscape before you reach your lodge in the afternoon.

Distance: 310km

In the middle of the Namib Desert, the Desert Homestead Lodge has stunning views, a pool and a variety of activities on offer either at the lodge or nearby. Choose from game drives, horseback riding, sleep outs, hiking, hot air ballooning, scenic flights and wine tasting!

Included meals: Breakfast, dinner

Accommodation: Desert Homestead Lodge

Optional activities: Game drives, nature walks, sleep outs, horse riding, scenic flights and hot air ballooning

DAY 3 - SOSSUSVLEI

Sossusvlei is where you will find the iconic red sand dunes of the Namib. The clear blue skies contrast with the giant red dunes to make this one of the most scenic natural wonders of Africa and a photographer's heaven, especially at sunrise. Visitors can climb 'Big Daddy', one of tallest sand dunes in the world at over 400m. Nearby is Deadvlei, a white, salt, claypan dotted with ancient trees and Sesriem Canyon, a striking natural feature of the area that is best explored on foot. Sossusvlei is also home to wildlife including oryx, springbok, ostrich and a variety of reptiles.

Included meals: Breakfast, dinner

Accommodation: Desert Homestead Lodge

Optional activities: Game drives, nature walks, sleep outs, horseback riding, scenic flights and hot air ballooning

DAY 4 - SWAKOPMUND

After breakfast set off for Swakopmund. The quirky mix of German and Namibian influences and surrounding desert terrain make this seaside resort a hub for adventure activities.

Distance: 355km

Included meals: Breakfast

Accommodation: Strand Hotel Swakopmund

Optional activities: Quad biking, horse riding, paragliding, fishing, sightseeing and fascinating desert tours

DAY 5 - SWAKOPMUND

Day free to explore the town or participate in one of the many activities on offer. You can go on a fascinating walk with a wildlife expert to see the desert up close, or go on a cruise to spot dolphins and seals or even kayak with them, or the brave can try the adrenaline-filled sport of Dune Boarding, where you hurtle down the sandy slopes attached to a snowboard!

Included meals: Breakfast

Accommodation: Strand Hotel Swakopmund

Optional activities: Quad biking, horse riding, paragliding, fishing, sightseeing and fascinating desert tours

DAY 6 - TWYFELFONTEIN

After breakfast drive north towards the barren but beautiful landscape of the Skeleton Coast.

Distance: 340km

In the afternoon arrive at Twyfelfontein via the geological formations at Burnt Mountain and the Organ Pipes. Twyfelfontein features one of the largest and most important concentrations of rock art in Africa. Stone Age hunters settled here over six thousand years ago and left a vast collection of well preserved rock engravings at this UNESCO World Heritage site. (entrance fees are payable).

Or you can take an exciting 4x4 excursion along the Aba Huab River valley to search for elusive desert adapted elephants if they are in the area.

Included meals: Breakfast

Accommodation: Twyfelfontein Country Lodge

Optional activities: Visit to Cape Cross Seal reserve

DAY 7 - ETOSHA NATIONAL PARK

After breakfast drive to Etosha National Park, Namibia's premier spot for wildlife watching.

Distance: 345 km

Okaukuejo is located close to the southern entrance of the park, and famous for its flood-lit waterhole, where visitors can observe at close quarters a spectacle of animals congregating and interacting.

Included meals: Breakfast

Accommodation: Okaukuejo Resort

DAY 8 - ETOSHA NATIONAL PARK

After breakfast enjoy a thrilling day of wildlife spotting, as you drive through Etosha National Park to Onguma Game Reserve.

Etosha is one of Africa's largest National Parks and has a salt pan so large that it can be seen in space. Lion, leopard, cheetah, rhino, hyena, zebra and giraffe are all found here as well as jackals, bat-eared fox, warthog and honey badgers.

Situated east of Etosha bordering Fisher's Pan wetland area, Onguma Game Reserve features a variety of wildlife including plains game, black rhino, kudu, giraffe, zebra, lion, cheetah, leopard and more than 300 bird species.

Onguma Bush Camp is ideal for families with children. The lounge and dining areas overlook a stunning waterhole that affords great opportunities to see nature at play around the clock. You don't even have to leave the camp to see the game – they come to you!

Included meals: Breakfast, dinner

Accommodation: Onguma Bush Camp

DAY 9 - ONGUMA GAME RESERVE

At Onguma Bush Camp there has always been an emphasis on family. The staff go out of their way to make sure the young ones have the time of their lives and the parents get their own satisfying safari experience. The bushveld of Onguma is a wild wonderland, a child's dream come true, and the Lodge delights in being able to share her secrets with the next generation.

Today you will spend time going on morning & afternoon game drives and have an interpretive bush walk.

Included meals: Breakfast, dinner

Accommodation: Onguma Bush Camp

DAY 10 - ERINDI GAME RESERVE

After breakfast drive south to Erindi Game Reserve.

Distance: 345km

The Erindi Game Reserve is spectacularly scenic and inhabited by an abundance of diverse wildlife. This idyllic retreat is also known for its

ecotourism, rich cultural heritage, and community involvement. In the afternoon you can go on a thrilling game drive to view elephants, giraffes, rhino, lion, hyena, zebra, kudu, wildebeest and many other animals. Don't miss the opportunity to jump on a night drive to catch a glimpse of the nocturnal species that thrive in the dark wilderness.

Included meals: Breakfast, dinner

Accommodation: Erindi Old Traders Lodge

Optional activities: cultural village tours, San rock art, guided bush walks

DAY 11 - WINDHOEK AND HOME

After breakfast return to Windhoek international airport to return your vehicle and catch your international flight home.

Distance: 240km

Included meals: Breakfast

WHAT'S INCLUDED

- Transfers to/from the airport
- Accommodation and meals as specified
- 4 x 4 double cabin standard vehicle

WHAT'S NOT INCLUDED

- International flights
- Visas
- Travel insurance
- Fuel
- Activities and excursions
- Park entrance and sightseeing fees
- Drinks
- Phone calls
- Laundry
- Personal purchases
- Tips and gratuities
- Any COVID-related testing

IMPORTANT INFORMATION

- Vaccinations are recommended for Namibia. Please consult your doctor for advice.
- US Passport holders require a visa to visit Namibia. These are obtained at the port of entry and are free of charge. British passport holders can visit for up to 90 days without a visa.
- Children 12 years and under pay 50% of the adult rate when sharing a room with parents - maximum of 2 children and subject to family rooms being available.
- Please let The Big Safari Company know prior to travelling if you have any medical needs or take any medication that we need to be made aware of to ensure that you have a safe and pleasant tour.
- Cancellation 90 - 0 days prior to departure: cancellation fee is 100%. It is your responsibility to ensure the correct travel insurance in place to protect you against the need to cancel your holiday. Deposits are non-refundable. Balance payments due 14 weeks prior to departure.
- Further terms and conditions apply and will be provided upon request or at the time of booking. The Big Safari Company reserves the right to withdraw any offer prior to accepting a reservation request. This does not affect your statutory rights. This offer is subject to availability.

BOOK YOUR JOURNEY

Choose from the list of dates below

Call to Book

UK 0800 689 0941
USA 1 800 949 3295

Monday to Thursday 09:00am - 8:00pm. Friday 09:00am - 05:30pm. (London time)